

Power management for IT equipment

# Intelligent Power Software

Bridging the gap between  
physical infrastructure and virtual IT



**EATON**

*Powering Business Worldwide*

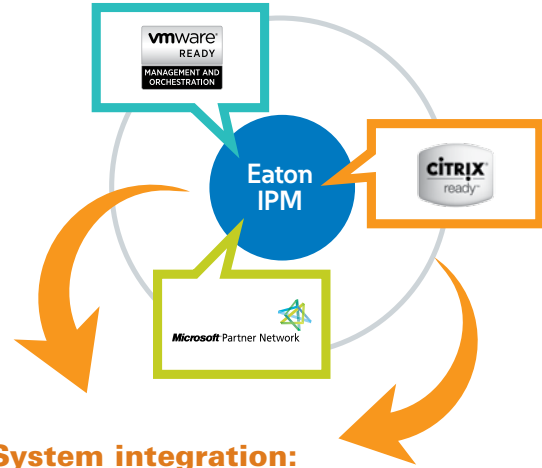
[www.eaton.eu/intelligentpower](http://www.eaton.eu/intelligentpower)

# Eaton Intelligent Power Software

## Bridging the gap between physical infrastructure and virtual IT

Eaton® Intelligent Power® Software integrates seamlessly with your power hardware to provide unparalleled business continuity capabilities. It manages all network connected power infrastructure devices, including UPSs and rack based power distribution units (ePDU®s), triggers virtual machine migration plans and shuts down non-essential devices in order to keep your business running during power and environmental events.

### Improve efficiencies and lower costs



#### System integration:

Simplify setup and reduce the learning curve by conveniently integrating into existing virtual management systems, allowing you to spend time performing other critical tasks.

#### Remote agentless host management:

Conserve valuable time when remotely shutting down servers by eliminating the need for agents that consume resources and slow performance.



Visit [www.eaton.eu/intelligentpower](http://www.eaton.eu/intelligentpower) to view demos and download software.

## Intelligent Power Pod Your Business Live 365

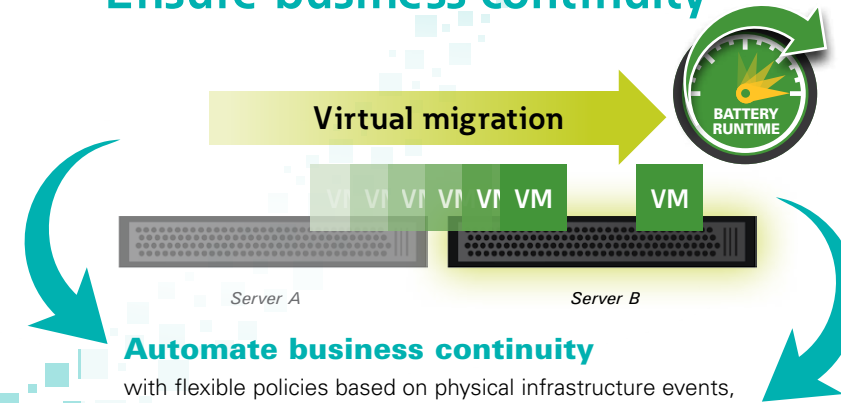
Eaton's Intelligent Power Pod is an integrated power management solution for modern virtual and cloud-based IT applications including converged and hyper-converged infrastructures.

It reliably houses and protects IT applications, ensuring data integrity and business continuity through policy-based integration with leading virtualisation platforms and their disaster recovery capabilities.

Your IT applications are protected, managed and work non-stop.

[www.eaton.eu/live365](http://www.eaton.eu/live365)

### Ensure business continuity



#### Automate business continuity

with flexible policies based on physical infrastructure events, including power and environmental conditions.

Define and execute sequential load shedding or disaster recovery policies for a VM, a vApp, or groups of VMs/vApps from directly within Intelligent Power Manager.

#### Workload management

Remotely and gracefully shut down servers and select storage devices during a power event.

Prioritise and shed non-critical loads to extend runtime during an extended power outage.

Trigger vMotion, XenMotion™ and other migration applications to transparently move virtual machines to an available server on the network.

#### Failover

Trigger VMware Site Recovery Manager disaster recovery plans during a power outage.

#### Power capping

Keep critical workloads running longer during a power outage by limiting server power consumption.

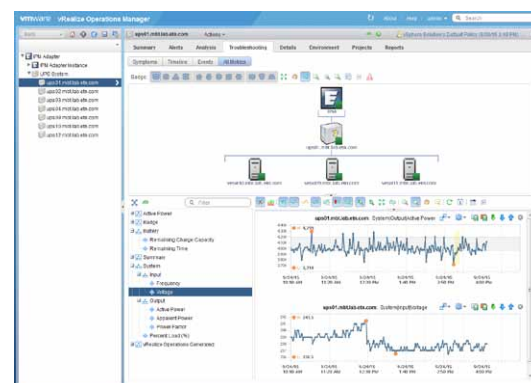
New

## Eaton Infrastructure Management Pack for vRealize\*

Available Q4 2015

- Exposes what is happening on the underlying power infrastructure to vRealize via a new Eaton UPS Overview dashboard
- Automatically factors the state of the Eaton power infrastructure into the vRealize predictive analytics for the health and risk indicators of endpoints

\*VMware vRealize™ Suite



# Eaton's Intelligent Power Manager integrates seamlessly into industry-leading virtualisation platforms

	VMware	Citrix	Microsoft	Red Hat
Create flexible business continuity policies triggered by power and environmental events	★	★	★	★
Shutdown virtual machines	★	★	★	★
Trigger live migration	★	★	★	
Manage virtual machines and power through a single pane of glass	★	★		
Real-time notification of power outages	★	★	★	
Virtual desktop infrastructure integration	★	★		
Shutdown a host in a cluster without installing software on each host	★	★		
Virtual appliance	★	*	*	*
Disaster avoidance, recovery site backup	★			
<b>Cost</b>	Free up to 10 nodes (UPS or ePDU)			

\* OVF compliant; fully tested on VMware



Intelligent Power Manager	Part #
Support for 1 to 10 licensed nodes	Free download
Intelligent Power Manager – Silver edition	Part #
Support up to 100 licensed nodes	66925
Intelligent Power Manager – Gold edition	Part #
Support unlimited licensed nodes	66926

One licensed node is defined as an UPS, ePDU® or IPM/IPP instance.

*"All of the others say their software integrates into VMware, but when challenged and asked to demonstrate that in house, they couldn't do it. Eaton was the only one who could deliver."*

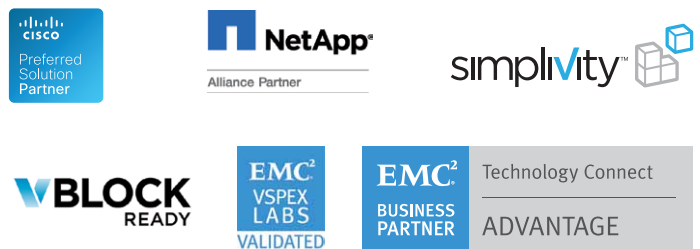
—Tom McNinch, Washington Unified School District IT manager

[www.eaton.eu/intelligentpower](http://www.eaton.eu/intelligentpower)

## Eaton power management solutions for converged and hyper-converged infrastructures

Eaton collaborates with the leaders in converged and hyper-converged infrastructures and provide lab-validated power management solutions to ensure high uptime of IT systems and data integrity in case of power and environmental issues.

This results in increased efficiencies, lower costs and improved continuity and resiliency of customers' entire business.



[www.eaton.eu/live365](http://www.eaton.eu/live365)